



Feature -

- Noiseless
- High bright LED illumination
- Long life
- Single pole and double pole

Applications -

- Communication equipments
- Instrumentation
- Audio/Video products

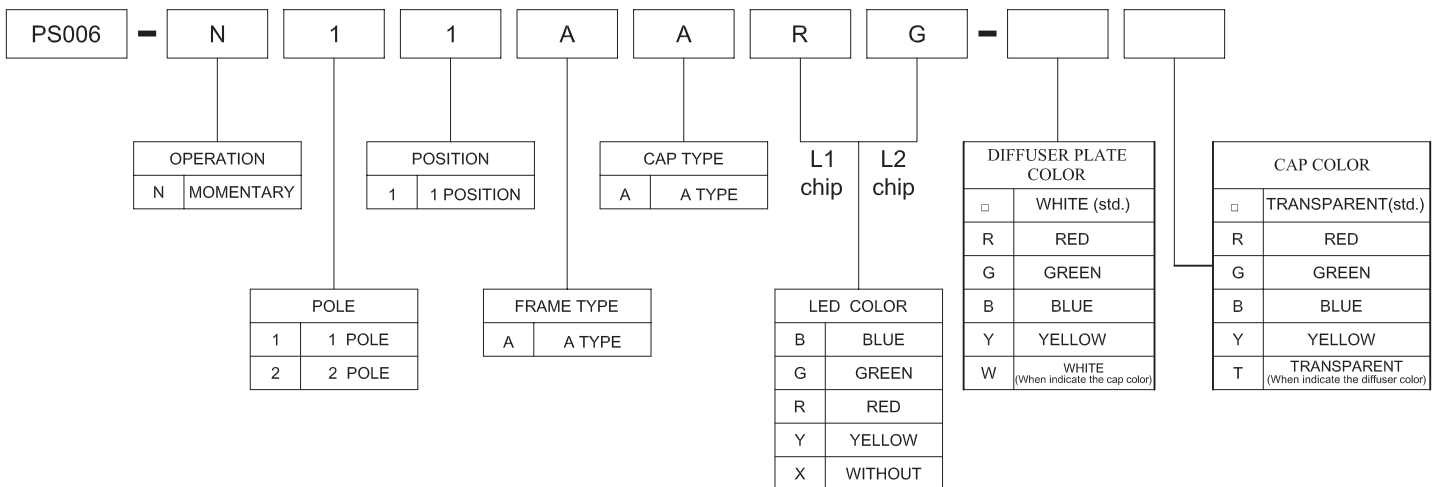
► SPECIFICATIONS

SWITCH SPECIFICATIONS	
POLE - POSITION	OFF - ON for Momentary Type , SPST , DPST
CONTACT RATING	12mA 12V DC
CONTACT RESISTANCE	50 mΩ max .
INSULATION RESISTANCE	100 MΩ min . 500 V DC
DIELECTRIC STRENGTH	Breakdown is not Allowable ; 500 V AC for 1 Minute
OPERATING FORCE	150 ± 100 gf (SPST) 200 ± 150 gf (DPST)
OPERATING LIFE	200,000 cycles
OPERATING TEMPERATURE RANGE	-20°C ~ 70°C
TOTAL TRAVEL	2.2 ± 0.2 mm

LED SPECIFICATIONS				
ATTENTION LEDs are Electrostatic Sensitive devices	Unit	Value / LED Color		
		Green	Red	
FORWARD CURRENT	If	mA	30	15
REVERSE VOLTAGE	Vr	V	5.0	5.0
REVERSE CURRENT	Ir	μA	10	10
FORWARD VOLTAGE@20mA	Vf	V	1.7-2.6	1.7-2.6
LUMINOUS INTENSITY@20mA	Iv	mcd	6	4

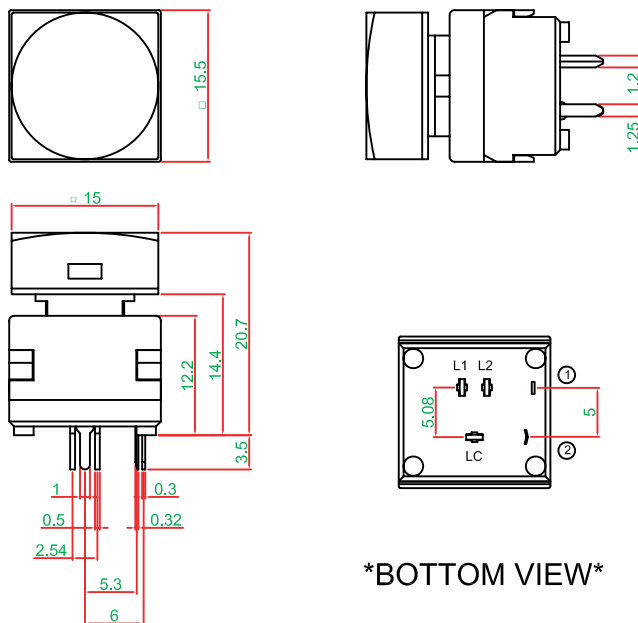
■ Physical and electrical information of LED will be provided upon customer's request on switches .

► HOW TO ORDER



DIMENSION & FRAME TYPE

PS006-N11AA□□

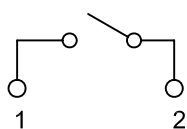


SCHEMATIC

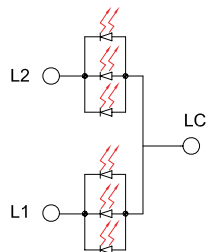
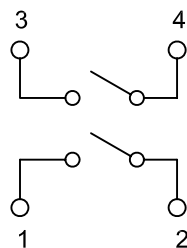
SWITCH

LED

1P1T

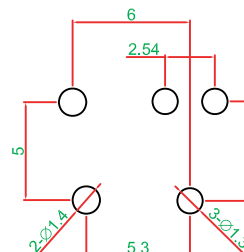


2P1T

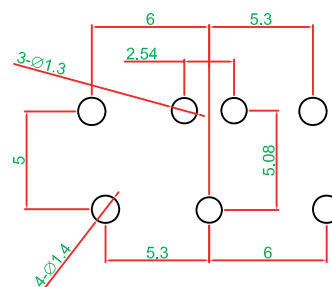


P.C.B LAYOUT

1P1T



2P1T



MATERIAL

- COVER - PC
- ACTUATOR - POM
- BASE FRAME - PA + GF
- TERMINAL : BRASS NICKEL PLATING & GOLD FLASH
- MOVING CONTACT : BRASS NICKEL PLATING & GOLD FLASH

UNIT WEIGHT

- PS006-N11AA□□ : 4.1 ± 0.05 g / pcs
- PS006-N21AA□□ : 4.3 ± 0.05 g / pcs