



Feature -

- LED illumination , Two color available
- Snap in Panel Mount installation
- Single pole / Single throw , Momentary

Applications -

- Automotive Industry
- Office Appliance
- Communication Equipments, Racing Helmet

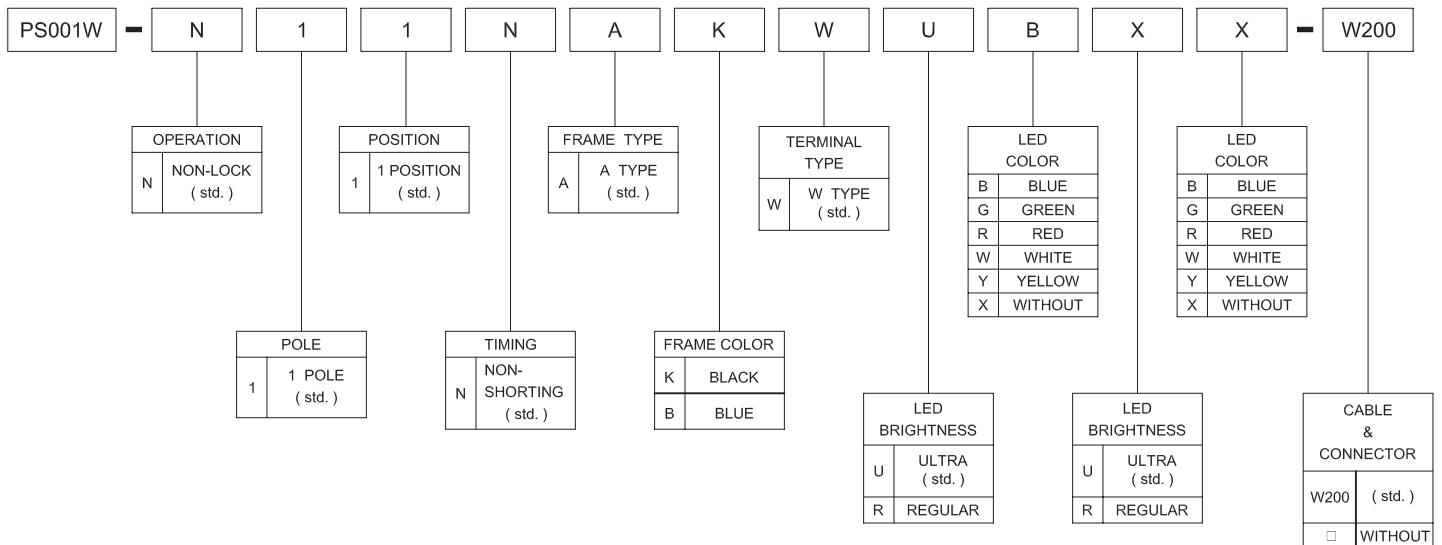
► SPECIFICATIONS

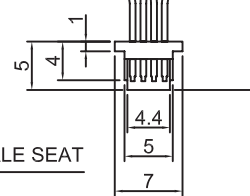
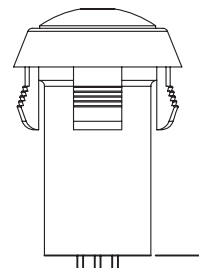
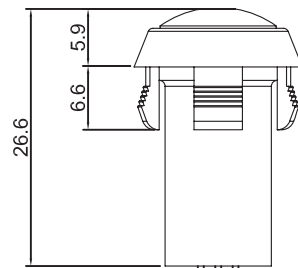
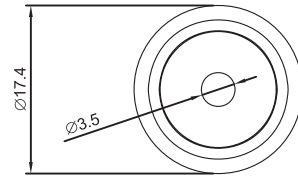
SWITCH SPECIFICATIONS	
POLE - POSITION	Momentary Type , SPST with LED
CONTACT RATING	30 V DC , 0.1 A
CONTACT RESISTANCE	50 mΩ max . 1.5 V DC ; 100 mA , by Method of Voltage DROP
INSULATION RESISTANCE	100 MΩ min . 500 V DC
DIELECTRIC STRENGTH	Breakdown is not Allowable ; 500 V AC for 1 Minute
OPERATING FORCE	250 ± 100 gf
OPERATING LIFE	50,000 cycles
OPERATING TEMPERATURE RANGE	-40°C ~ 85°C
TOTAL TRAVEL	1.8 ± 0.3 mm

LED SPECIFICATIONS		Value / LED Color				
ATTENTION LEDs are Electrostatic Sensitive devices	Unit	Blue	Green	Red	White	Yellow
		FORWARD CURRENT	If	30	30	30
REVERSE VOLTAGE	Vr	5.0	5.0	5.0	5.0	5.0
REVERSE CURRENT	Ir	50	10	10	10	10
FORWARD VOLTAGE@20mA	Vf	@4mA 2.5-3.5	1.7-2.6	2.0-2.5	3.3-3.8	2.2-2.7
LUMINOUS INTENSITY@20mA	Iv	@4mA 160	65-120	100	145	200

■ Physical and electrical information of LED will be provided upon customer's request on switches .

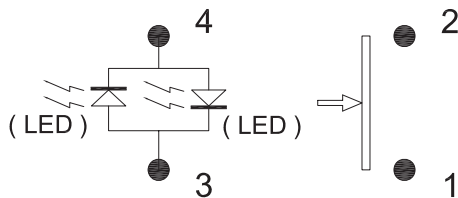
► HOW TO ORDER



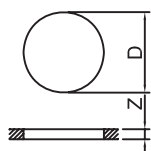
► DIMENSION


- 1 (VBAT) BLACK
- 2 (P SWITCH) BROWN
- 3 (LED +) RED
- 4 (LED -) ORANGE

FEMALE SEAT

► PS001W-N11NAKWUBXX-W200
► LED CIRCUIT DIAGRAM

► MATERIAL

- COVER - PA + GF
- ACTUATOR - PC
- BASE FRAME - PA + GF
- TERMINAL - BRASS GOLD FLASH

► PANEL CUT OUT


Z	D
1.0 ~ 2.0	15.2 ~ 15.4
2.0 ~ 2.5	15.4 ~ 15.8
2.5 ~ 3.0	15.8 ~ 16.0

► UNIT WEIGHT

- PS001 - 3.75 ± 0.05 g / pcs